



# HIPCHECK™ 1.0.3

Proactive Mobile System Administration is Here

## MONITOR AND MANAGE UNIX AND WINDOWS SYSTEMS IN REAL TIME THROUGH YOUR MOBILE PHONE



HipCheck is an innovative productivity tool for system administrators. Using a Windows® Mobile Pocket PC, Blackberry®, Treo® or Java enabled smart phones, system administrators can pro-actively monitor and manage Windows, Solaris™ and SCO® UNIX® systems, set triggers for real-time event alerts, and immediately respond to those alerts by viewing critical parameters and executing system commands.

With HipCheck, you're the first to know when something has gone wrong or – more importantly – before something goes wrong. It's all in how you set your event alert triggers.

And since everything happens through the phone or your desktop, you're never out of touch, and you don't have to leave the situation you're in to deal with new issues that crop up.

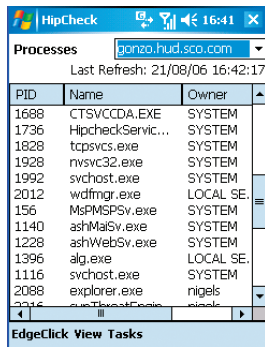
It all adds up to fewer problems overall, faster event response times, lower administration costs, higher system availability and with all of that, higher user satisfaction.



## PROACTIVE MOBILE ADMINISTRATION MEANS:

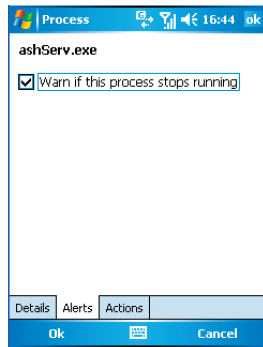
### 24/7 System Monitoring

Constantly monitor the health of your Windows and UNIX systems from anywhere.



### Real-Time Alerts

Receive and acknowledge alerts on your mobile phone via SMS.



### System Command Execution

Remotely execute system commands through your phone to respond to triggered alerts.



## HIPCHECK BENEFITS

- > Higher overall system uptime
- > Proactive and preventative system management in real-time
- > Powerful and easy to use, intuitive interface
- > Affordable and adaptable for businesses of all sizes
- > Higher User satisfaction
- > Higher Productivity and job satisfaction for system administrators

Proactively set real-time event triggers and respond immediately to alerts – all through your mobile phone.



**HIPCHECK HAS THREE COMPONENTS:**

**HipCheck Agent**

This is a small, unobtrusive executable that is installed on each system that you want to monitor. An agent runs in the background, monitoring the system's hardware and operating system status and communicating this status to the SCO Mobile Server. Agents are available for SCO UNIX, Sun Solaris and Microsoft Windows systems (servers and PCs).

**HipCheck Client**

This is a graphical user interface that enables an authorized user to proactively monitor system performance, perform administration actions, and/or respond to alerts to correct problems.

HipCheck is available both as a mobile client that runs on many popular handsets, including Windows Mobile devices, Blackberry and Treo smartphones or it can run on a Windows PC client.

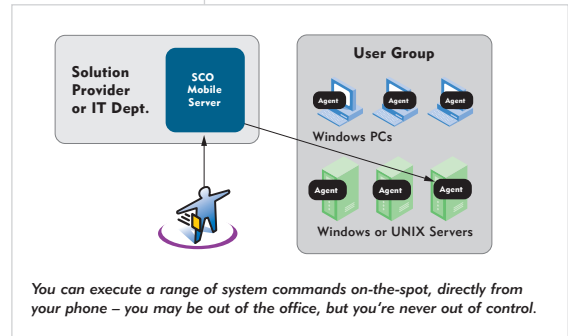
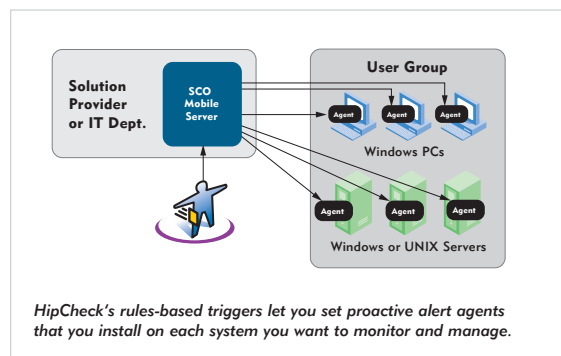
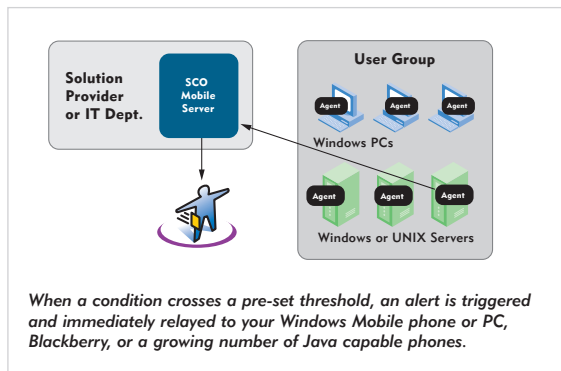
**SCO Mobile Server**

HipCheck utilizes SCO Mobile Server technology, which provides an architecture and the system level functions that high-performance mobile business solutions need. SCO Mobile Server is an edge of network node for developing mobile business applications that provide secure and reliable access to back end corporate data. SCO Mobile Server provides an administration web interface to set up the systems to be monitored, and assign system alert, monitoring and control privileges to system administrators.

**MAINTAINING COMPLETE SECURITY**

The HipCheck architecture maintains the highest levels of security for sensitive information:

- > No data is stored on the mobile phone(s).
- > All communications between the phones and the SCO Mobile Server are encrypted.
- > There need only be a single connection through the firewall, i.e., all communications between the SCO Mobile Server and the agents can be transparently passed through a Relay Agent on a designated server.



**DEPLOYMENT OPTIONS**

**SCO-Hosted**

A subscription-only service in which the SCO Mobile Server is maintained at one of SCO's data centers.

**Partner-Hosted**

The SCO Mobile Server is hosted by a solution partner who uses HipCheck to provide proactive remote support services for their solution customers.

**Customer Premises Installation**

The SCO Mobile Server is installed in the customer's data center.

**SYSTEM REQUIREMENTS**

**PC Client:**

Windows XP Home or Pro  
Windows 2003, Windows 2000

**Mobile Client:**

Phones that run either Pocket PC 2003 or Windows Mobile 5.0 Pocket PC.

A growing list of Java (J2ME) capable phones including Treo, Blackberry, and a growing number of Java capable phones (see HipCheck web site for current list).

**Monitored Systems:**

- SCO OpenServer 6
- SCO OpenServer 5.0.7
- SCO UnixWare 7.1.1 to 7.1.4
- Sun Solaris 8 (and higher versions)
- Windows 2003 Server (all editions)
- Windows XP Professional
- Windows 2000 Server