



HIPCHECK™ 1.1

Proactive Mobile System Administration is Here

MONITOR AND MANAGE UNIX AND WINDOWS SYSTEMS IN REAL TIME THROUGH YOUR MOBILE PHONE



HIPCHECK™

HipCheck is an innovative productivity tool for system administrators. Using a Windows® Mobile Pocket PC, Blackberry®, Treo® or Java enabled smart phones, system administrators can pro-actively monitor and manage Windows, Solaris™ and SCO® UNIX® systems, set triggers for real-time event alerts, and immediately respond to those alerts by viewing critical parameters and executing system commands.

With HipCheck, you're the first to know when something has gone wrong or – more importantly – before something goes wrong. It's all in how you set your event alert triggers.

And since everything happens through your mobile phone or desktop, you're never out of touch. HipCheck allows you to handle new issues from anywhere, at anytime.

It all adds up to fewer problems overall, faster event response times, lower administration costs, higher system availability and with all of that, higher user satisfaction.



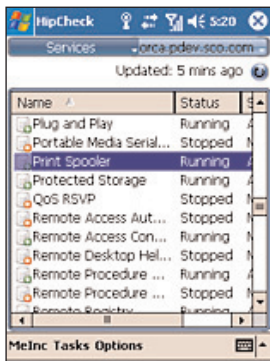
HipCheck PC Client



PROACTIVE MOBILE ADMINISTRATION MEANS:

24/7 System Monitoring

Constantly monitor the health of your Windows and UNIX systems from anywhere.



Real-Time Alerts

Receive and acknowledge alerts on your mobile phone via SMS.



System Command Execution

Remotely execute system commands through your phone to respond to triggered alerts.



Windows Mobile Client



Java Client

HIPCHECK BENEFITS

- Higher overall system uptime
- Proactive and preventative system management in real-time
- Powerful and easy to use, intuitive interface
- Affordable and adaptable for businesses of all sizes
- Active higher user satisfaction
- Higher Productivity and job satisfaction for system administrators

Proactively set real-time event triggers and respond immediately to alerts – all through your mobile phone.



HIPCHECK HAS THREE COMPONENTS:

HipCheck Agent

This is a small, unobtrusive executable that is installed on each system that you want to monitor. An agent runs in the background, monitoring the system's hardware and operating system status and communicating this status to the SCO Mobile Server. Agents are available for SCO UNIX, Sun Solaris and Microsoft Windows systems (servers and PCs).

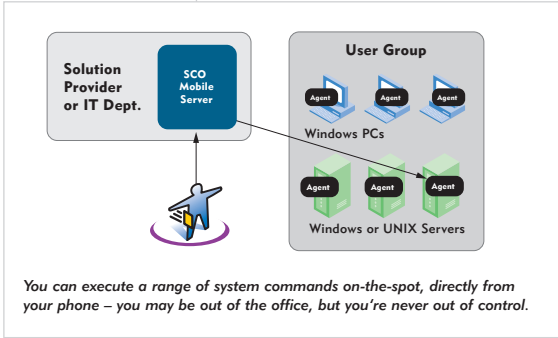
HipCheck Client

This is a graphical user interface that enables an authorized user to proactively monitor system performance, perform administration actions, and/or respond to alerts to correct problems.

HipCheck is available both as a mobile client that runs on many popular handsets, including Windows Mobile devices, Blackberry and Treo smartphones or it can run on a Windows PC client.

SCO Mobile Server

HipCheck utilizes SCO Mobile Server technology, which provides an architecture and the system level functions that high-performance mobile business solutions need. SCO Mobile Server is an edge of network node for developing mobile business applications that provide secure and reliable access to back end corporate data. SCO Mobile Server provides an administration web interface to set up the systems to be monitored, and assign system alert, monitoring and control privileges to system administrators.



DEPLOYMENT OPTIONS

SCO-Hosted

A subscription-only service in which the SCO Mobile Server is maintained at one of SCO's data centers.

Partner-Hosted

The SCO Mobile Server is hosted by a solution partner who uses HipCheck to provide proactive remote support services for their solution customers.

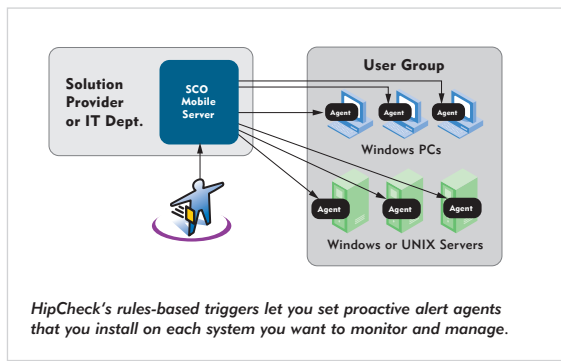
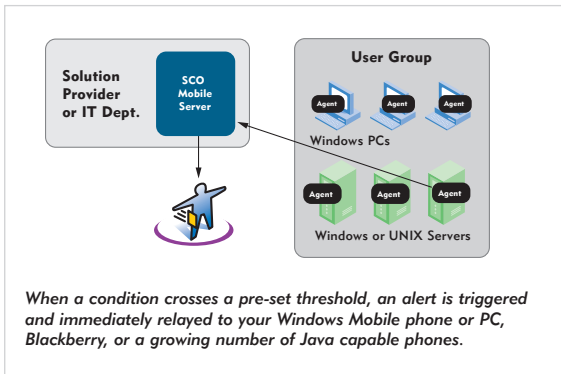
Customer Premises Installation

The SCO Mobile Server is installed in the customer's data center.

WHAT'S NEW IN HIPCHECK 1.1

HipCheck 1.1 provides the following new features:

- Audit Trail
- New Windows Mobile and Windows native client user interface
- Support for Windows Mobile 6
- Support for Linux agents
- Greatly enhanced command execution
- Re-authentication before actions
- Software inventory list view
- Log file size alerts
- Service startup mode
- Power management support
- Improved Domain Controller support
- Active Directory authentication support
- New default port for UNIX agent
- Packaging changes relevant to UNIX agent
- Licensing user interface changes
- Internationalization and localization support
- Customization properties



SYSTEM REQUIREMENTS

PC Client:

Windows XP Home or Pro
Windows 2003, Windows 2000

Mobile Client:

Phones that run either Pocket PC 2003, Windows Mobile 5.0 Pocket PC, and Windows Mobile 6 Standard or Professional.

A growing list of Java (J2ME) capable phones including Treo, Blackberry, and a growing number of Java capable phones (see HipCheck web site for current list).

Monitored Systems:

- SCO OpenServer 6
- SCO OpenServer 5.0.7
- SCO UnixWare 7.1.1 to 7.1.4
- Sun Solaris 8 (and higher versions)
- Windows 2003 Server (all editions)
- Windows 2003x64
- Windows XP Professional
- Windows XPx64
- Windows 2000 Server
- Other UNIX variants